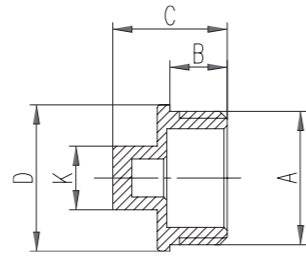


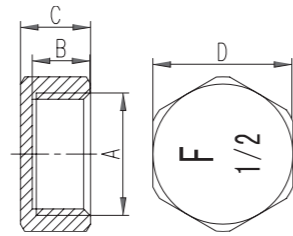
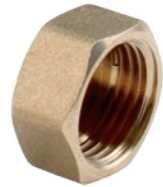
## Korek



symbol	A	B[mm]	C[mm]	Dø[mm]	K[mm]
KOR3Z	G1/2	9	18	23	10
KOR4Z	G3/4	11	20	30	13
KOR5Z	G1	11,5	21,5	37	16
KOR6Z	G1 1/4	12,5	25,5	45	22
KOR7Z	G1 1/2	13	28,5	52	23
KOR8Z	G2	17	34,5	63	30

symbol	A	B[mm]	C[mm]	Dø[mm]	K[mm]
KOR3C	G1/2	9	18	23	10
KOR4C	G3/4	11	20	30	13

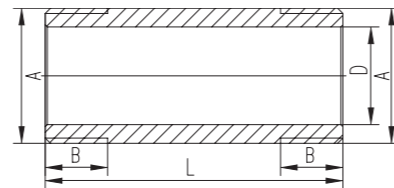
## Zaślepka



symbol	A	B[mm]	C[mm]	D [mm]
ZAS2Z	G1/2	10	12	24
ZAS3Z	G3/4	11,5	13,5	30
ZAS4Z	G1	13	15	36
ZAS5Z	G1 1/4	13	15	45,5
ZAS6Z	G1 1/2	13,5	16	52
ZAS7Z	G2	16,5	19	63,5

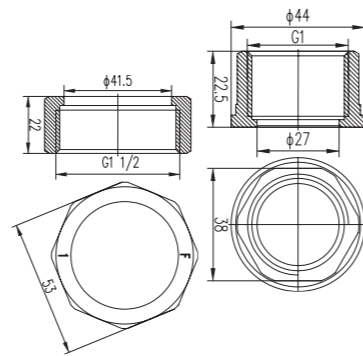
symbol	A	B[mm]	C[mm]	D [mm]
ZAS2C	G1/2	10	12	24
ZAS3C	G3/4	11,5	13,5	30

## Króciec



symbol	A	B[mm]	L[mm]	D[mm]
KR107Z	G1	15	107	25
KR165Z	G1	15	165	25

## Półśrubunek do pompy



symbol
SG18

**NOWOŚĆ**

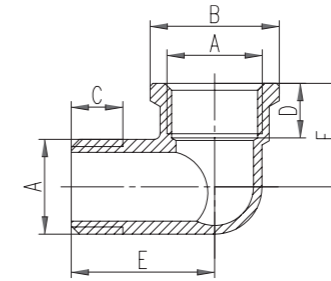
**FERRO**<sup>®</sup>  
GRUPA FERRO

Ferro S.A. właściciel marki Weberman  
ul. Przemysłowa 7, 32-050 Skawina  
tel.: +48 12 25 62 100, fax: +48 12 27 67 606, e-mail: info@ferro.pl  
[www.ferro.pl](http://www.ferro.pl)

**WEBERMAN**<sup>®</sup>

**ZŁĄCZKI**  
MOSIĘŻNE I CHROMOWANE

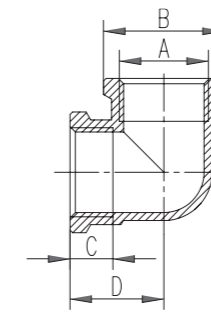
**NOWOŚĆ**



**Kolanko**  
nakrętno-wkrętne

symbol	A	Bø[mm]	C[mm]	D[mm]	E[mm]	F[mm]
K09C	G3/8	22,5	9	8,5	24,5	17
K12C	G1/2	27	10,5	11	29	22
K10C	G3/4	34	12,5	13	33,5	28

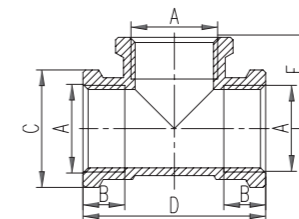
symbol	A	Bø[mm]	C[mm]	D[mm]	E[mm]	F[mm]
K09Z	G3/8	22,5	9	8,5	24,5	17
K12Z	G1/2	27	10,5	11	29	22
K10Z	G3/4	34	12,5	13	33,5	28
K11Z	G1	40	13	14	38	32
K13Z	G1 1/4	49	15	15	45	37
K14Z	G1 1/2	55	16	16	48	40
K15Z	G2	68	19	20	62	52



**Kolanko**  
nakrętno-nakrętne

symbol	A	Bø[mm]	C[mm]	D [mm]
K02C	G3/8	22,5	8,5	17,5
K03C	G1/2	27	11	22
K04C	G3/4	34	13,5	28

symbol	A	Bø[mm]	C[mm]	D [mm]
K02Z	G3/8	22,5	8,5	17,5
K03Z	G1/2	27	11	22
K04Z	G3/4	34	13,5	28
K05Z	G1	40	14	32
K06Z	G1 1/4	49	16	38
K07Z	G1 1/2	55	16	40,5
K08Z	G2	68	20	51

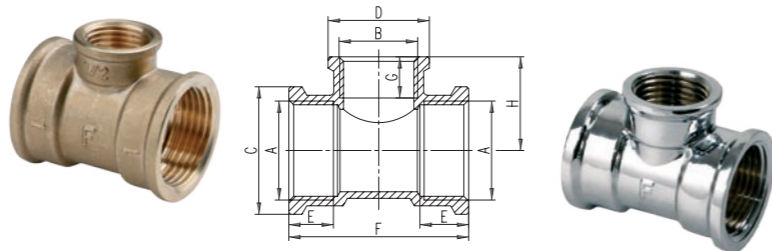


**Trójnik**

symbol	A	B[mm]	Cø[mm]	D[mm]	E[mm]
T01C	G3/8	8,5	22,5	35	17,5
T02C	G1/2	11	27	44	22
T03C	G3/4	13,5	34	56	28

symbol	A	B[mm]	Cø[mm]	D[mm]	E[mm]
T01Z	G3/8	8,5	22,5	35	17,5
T02Z	G1/2	11	27	44	22
T03Z	G3/4	13,5	34	56	28
T04Z	G1	14	40	64	32
T05Z	G1 1/4	16	49	76	38
T06Z	G1 1/2	16	55	81	40,5
T07Z	G2	20	68	102	51

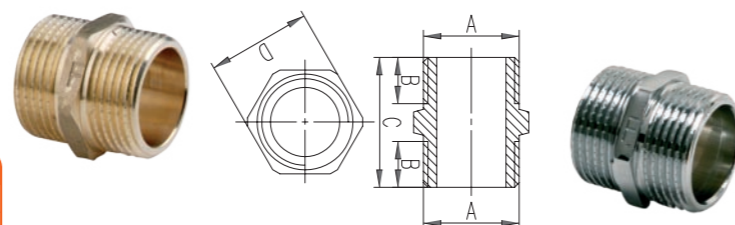
**Trójnik  
nakrętny  
redukcyjny**



symbol	A	B	Co[mm]	D	E[mm]	F[mm]	G[mm]	H[mm]
T08Z	G3/4	G1/2	34	27	13	28	11	25
T09Z	G1	G1/2	40	27	14	52	11	27,5
T10Z	G1	G3/4	40	34	14	57	13,5	30

symbol	A	B	Co[mm]	D	E[mm]	F[mm]	G[mm]	H[mm]
T08C	G3/4	G1/2	34	27	13	28	11	25

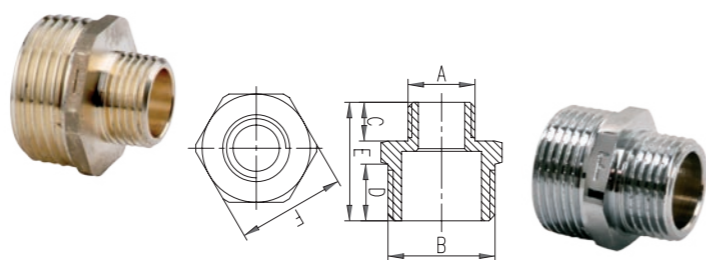
**Nypel**



symbol	A	Bo[mm]	C[mm]	D [mm]
N02Z	G3/8	9	22,5	18
N03Z	G1/2	10,5	25,5	23
N04Z	G3/4	12	29	28
N05Z	G1	13	31,5	35
N06Z	G1 1/4	15	35,5	44
N07Z	G1 1/2	16,5	39	50
N08Z	G2	19	45	62

symbol	A	Bo[mm]	C[mm]	D [mm]
N02C	G3/8	9	22,5	18
N03C	G1/2	10,5	25,5	23
N04C	G3/4	12	29	28

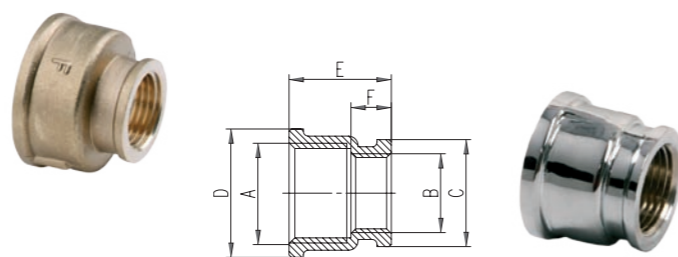
**Nypel  
redukcyjny**



symbol	A	B	C[mm]	D[mm]	E[mm]	F[mm]
N09Z	G1/4	G1/2	7,5	11	23	21
N11Z	G3/8	G1/2	9	11	24,5	21
N10Z	G1/2	G3/4	11,5	12,5	29	26,5
N12Z	G1/2	G1	11,5	14	30	33,5
N13Z	G3/4	G1	12	14	31	33
N14Z	G3/4	G1 1/4	13	16	34,5	42
N15Z	G1	G1 1/4	13,5	16	35	42
N16Z	G1	G1 1/2	13	16,5	35	48,5
N17Z	G1 1/4	G1 1/2	16	16,5	38	48,5
N18Z	G1	G2	14	20	40	60
N19Z	G1 1/4	G2	16	20	40	60
N20Z	G1 1/2	G2	16,5	20	42,5	60

symbol	A	B	C[mm]	D[mm]	E[mm]	F[mm]
N09C	G1/4	G1/2	7,5	11	23	21
N11C	G3/8	G1/2	9	11	24,5	21
N10C	G1/2	G3/4	11,5	12,5	29	26,5

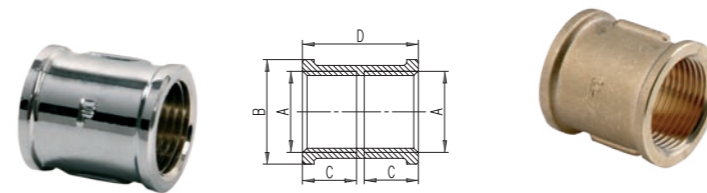
**Mufa  
redukcyjna**



symbol	A	B	Co[mm]	Dø[mm]	E[mm]	F[mm]
M08Z	G1/2	G3/8	22,5	27	21,50	8,5
M09Z	G3/4	G1/2	27	34	26	11,5
M11Z	G1	G1/2	27	40	28	12
M10Z	G1	G3/4	34	40	29	13
M12Z	G1 1/4	G1	40	49	33	14,5
M13Z	G1 1/2	G1	40	56	33	13,5
M14Z	G1 1/2	G1 1/4	49	56	35	16,5
M15Z	G2	G1	40	70	37	14
M16Z	G2	G1 1/4	49	70	39	16
M17Z	G2	G1 1/2	55	70	40	17

symbol	A	B	Co[mm]	Dø[mm]	E[mm]	F[mm]
M08C	G1/2	G3/8	22,5	27	21,50	8,5
M09C	G3/4	G1/2	27	34	26	11,5

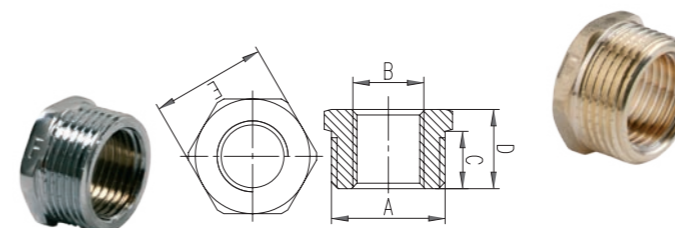
**Mufa**



symbol	A	Bo[mm]	C[mm]	D [mm]
M01C	G3/8	22,5	12	25
M02C	G1/2	27	14	30
M03C	G3/4	34	16	34

symbol	A	Bo[mm]	C[mm]	D [mm]
M02Z	G1/2	27	14	30
M03Z	G3/4	34	16	34
M04Z	G1	41	17	36
M05Z	G1 1/4	49,5	20	43
M06Z	G1 1/2	57	25	53
M07Z	G2	70	27	65

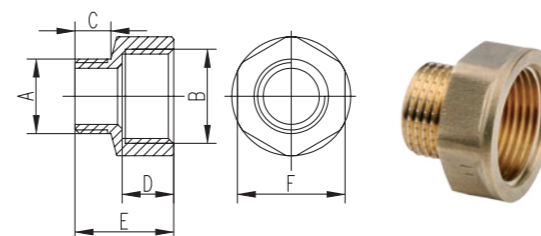
**Redukcja**



symbol	A	B	C[mm]	D[mm]	E[mm]
R01C	G1/2	G1/4	10,5	14,5	21
R02C	G1/2	G3/8	10,5	14,5	21
R03C	G3/4	G1/2	11	16	26,5

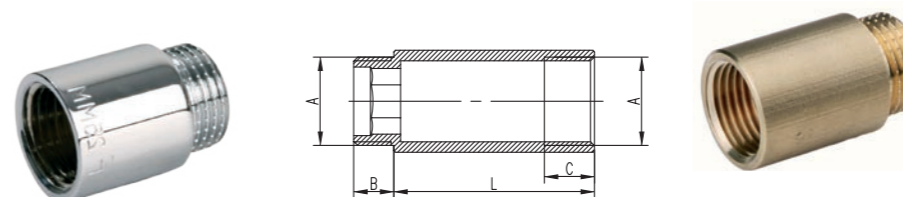
symbol	A	B	C[mm]	D[mm]	E[mm]
R01Z	G1/2	G1/4	10,5	14,5	21
R02Z	G1/2	G3/8	10,5	14,5	21
R03Z	G3/4	G1/2	11	16	26,5
R06Z	G1	G1/2	12	17,5	35
R04Z	G1	G3/4	12	17,5	35
R05Z	G1 1/4	G1	14	19,5	42
R09Z	G1 1/4	G3/4	14	19,5	42
R07Z	G1 1/2	G1	15	20,5	48,5
R08Z	G1 1/2	G1 1/4	15	20,5	48,5
R10Z	G2	G1	19	25,5	60
R11Z	G2	G1 1/4	19	25,5	60
R12Z	G2	G1 1/2	19	25,5	60

**Redukcja  
nakrętno-wkrętna**



symbol	A	B	C[mm]	D [mm]	E [mm]	F [mm]
RN01Z	G1/4	G3/8	8	10	20	20
RN02Z	G3/8	G1/2	8,5	11	21,5	24
RN03Z	G1/2	G3/4	11	12	25	30
RN04Z	G1/2	G1	11	13,5	28	37
RN05Z	G3/4	G1	12	14,5	29	37
RN06Z	G1	G1 1/4	13	16	32	46

**Przedłużka**



symbol	A	B[mm]	C[mm]	L[mm]
P10C	G1/2	10	8,5	10
P110C	G3/4	12	8	10
P15C	G1/2	10	12	15
P115C	G3/4	12	13	15
P20C	G1/2	10	12	20
P120C	G3/4	12	15	20
P25C	G1/2	10	12	25
P125C	G3/4	12	15	25
P30C	G1/2	10	12	30
P130C	G3/4	12	15	30
P40C	G1/2	10	12	40
P140C	G3/4	12	15	40
P50C	G1/2	10	12	50
P150C	G3/4	12	15	50

symbol	A	B[mm]	C[mm]	L[mm]
P10Z	G1/2	10	8,5	10
P110Z	G3/4	12	8	10
P15Z	G1/2	10	12	15
P115Z	G3/4	12	13	15
P20Z	G1/2	10	12	20
P120Z	G3/4	12	15	20
P25Z	G1/2	10	12	25
P125Z	G3/4	12	15	25
P30Z	G1/2	10	12	30
P130Z	G3/4	12	15	30
P40Z	G1/2	10	12	40
P140Z	G3/4	12	15	40
P50Z	G1/2	10	12	50
P150Z	G3/4	12	15	50
P60Z	G1/2	10	12	60
P160Z	G3/4	12	15	60